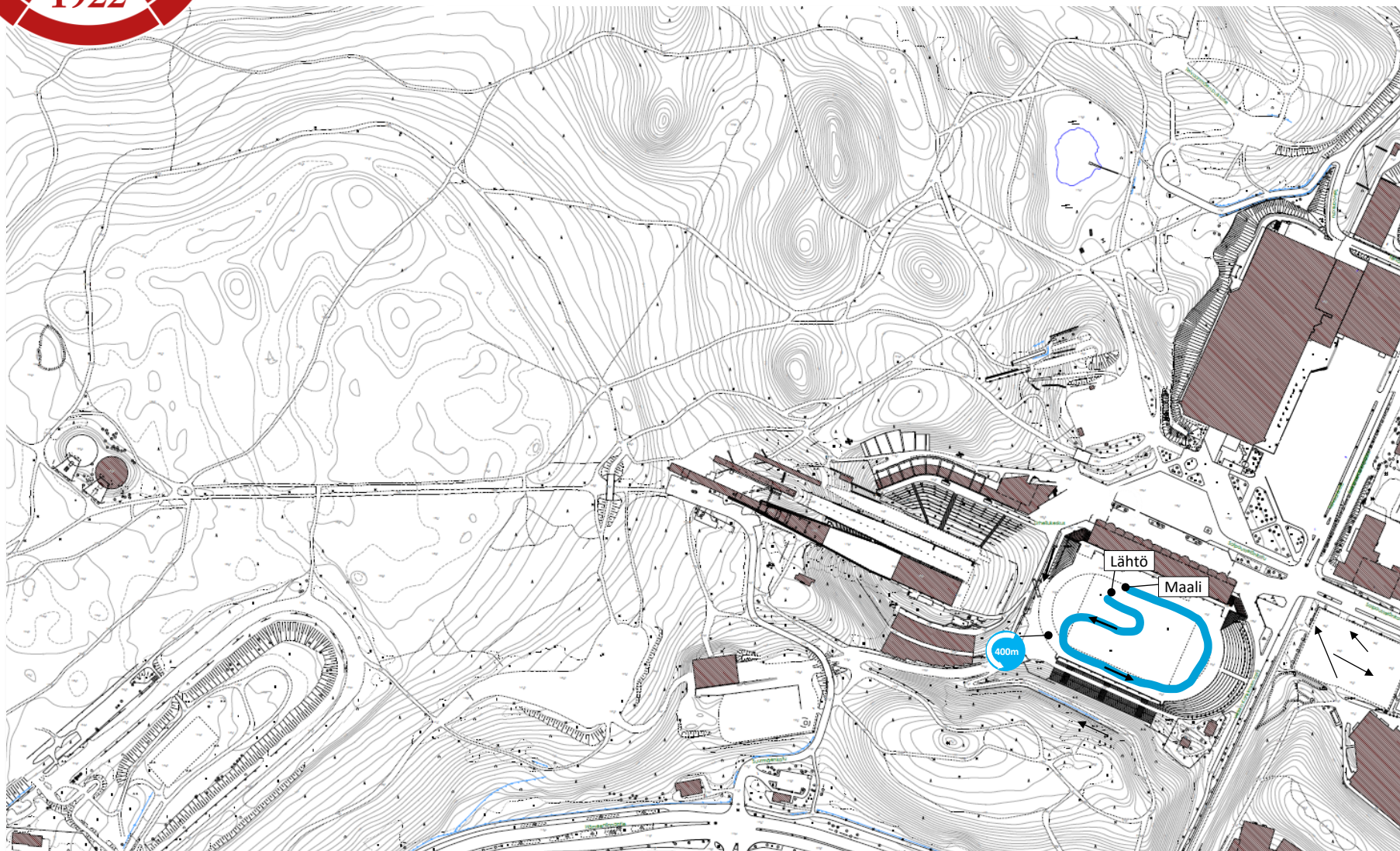




LHS Sarjahiihdot 11.3.2026 (V)

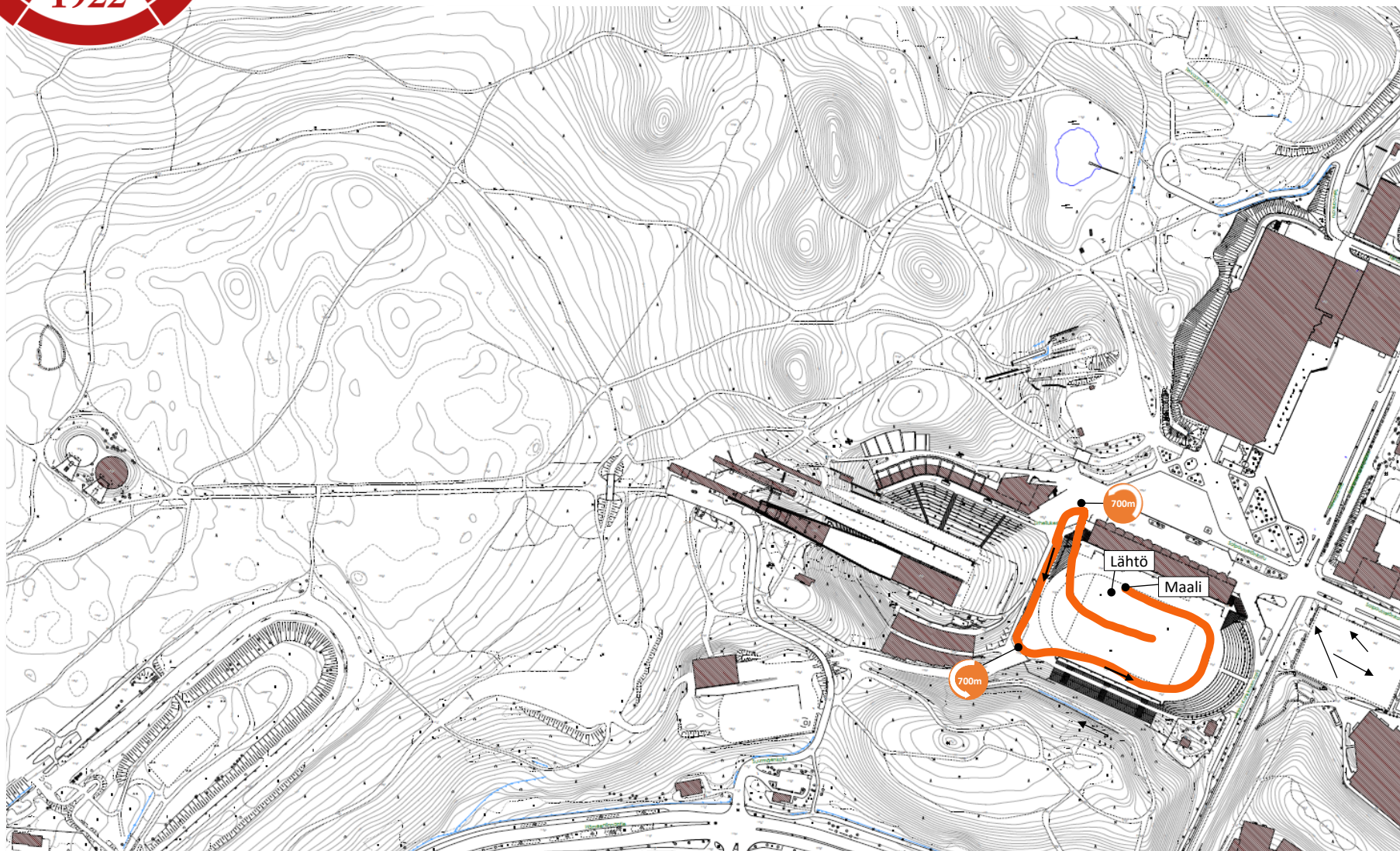
— 0,4 km (Tähtisarja)





LHS Sarjahiihdot 11.3.2026 (V)

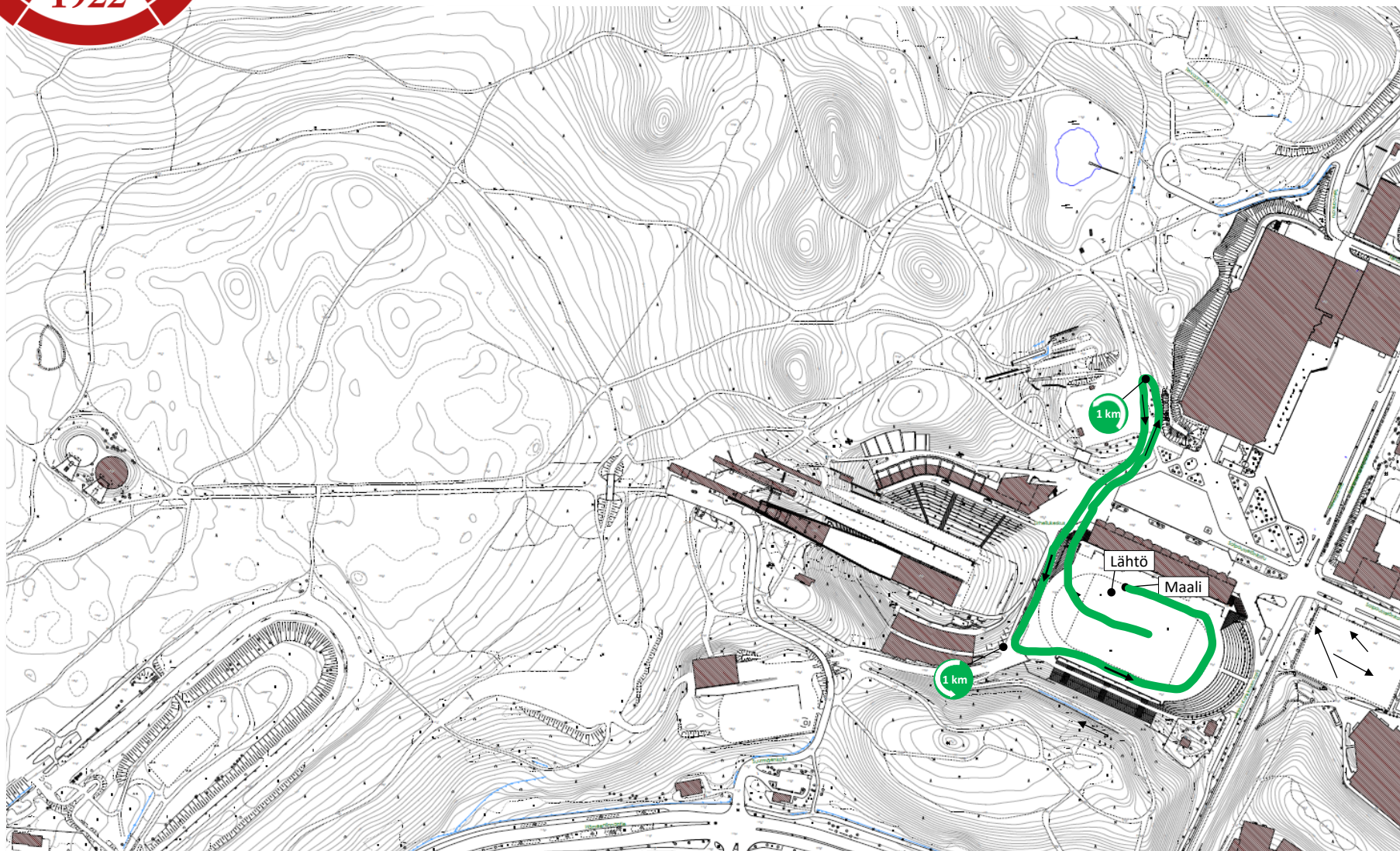
— 0,7 km (M/N6)





LHS Sarjahiihdot 11.3.2026 (V)

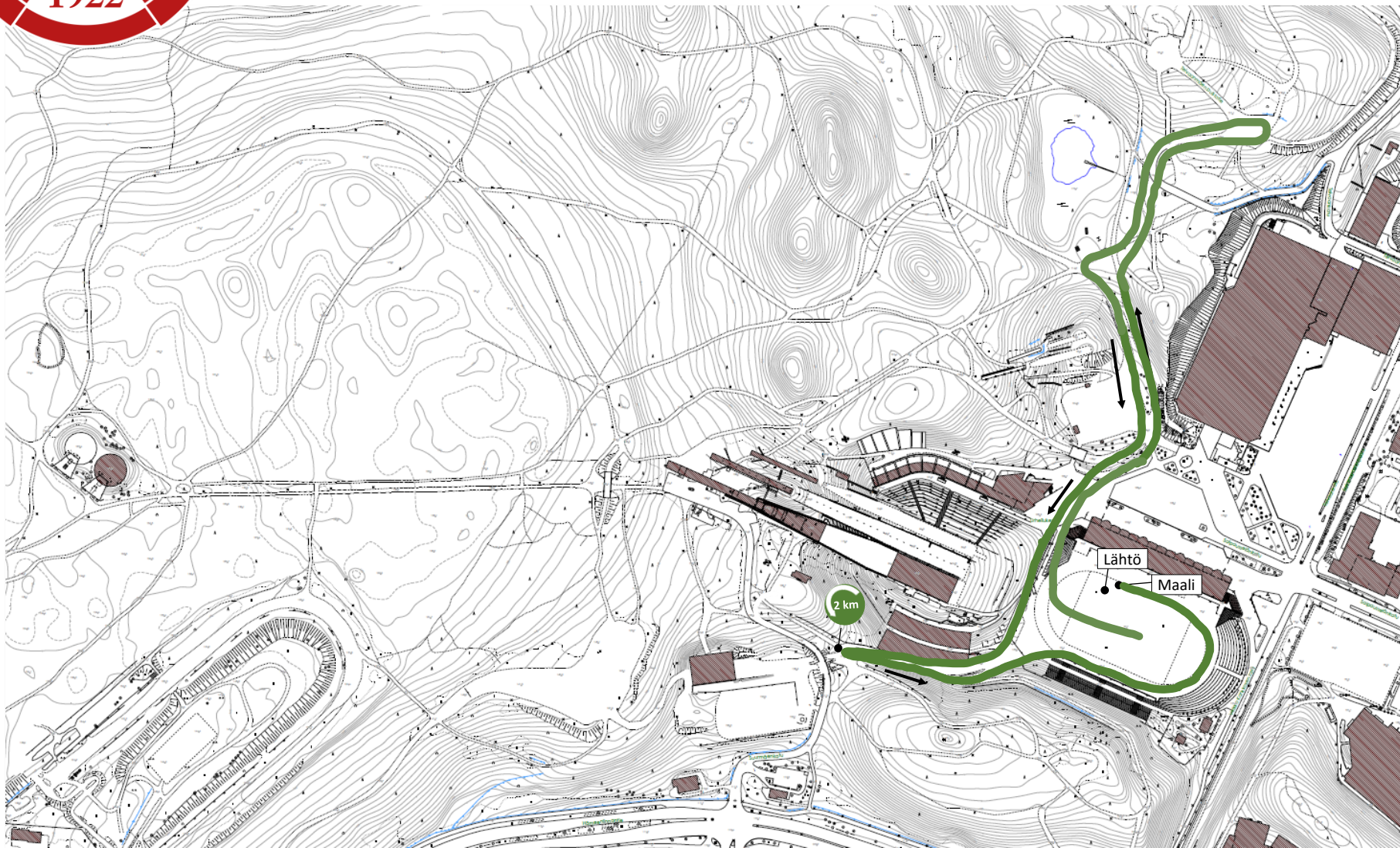
1 km (M/N8)





LHS Sarjahiihdot 11.3.2026 (V)

2 km (M/N10)





LHS Sarjahiihdot 11.3.2026 (V)

- 3 km (M/N12, N14)
- 2x 6 km (M14, N/M16 N18, N20, N35, N45, M/N55, M65)
- 3x 9 km (M18, M20, MYL, NYL, M35, M45)

